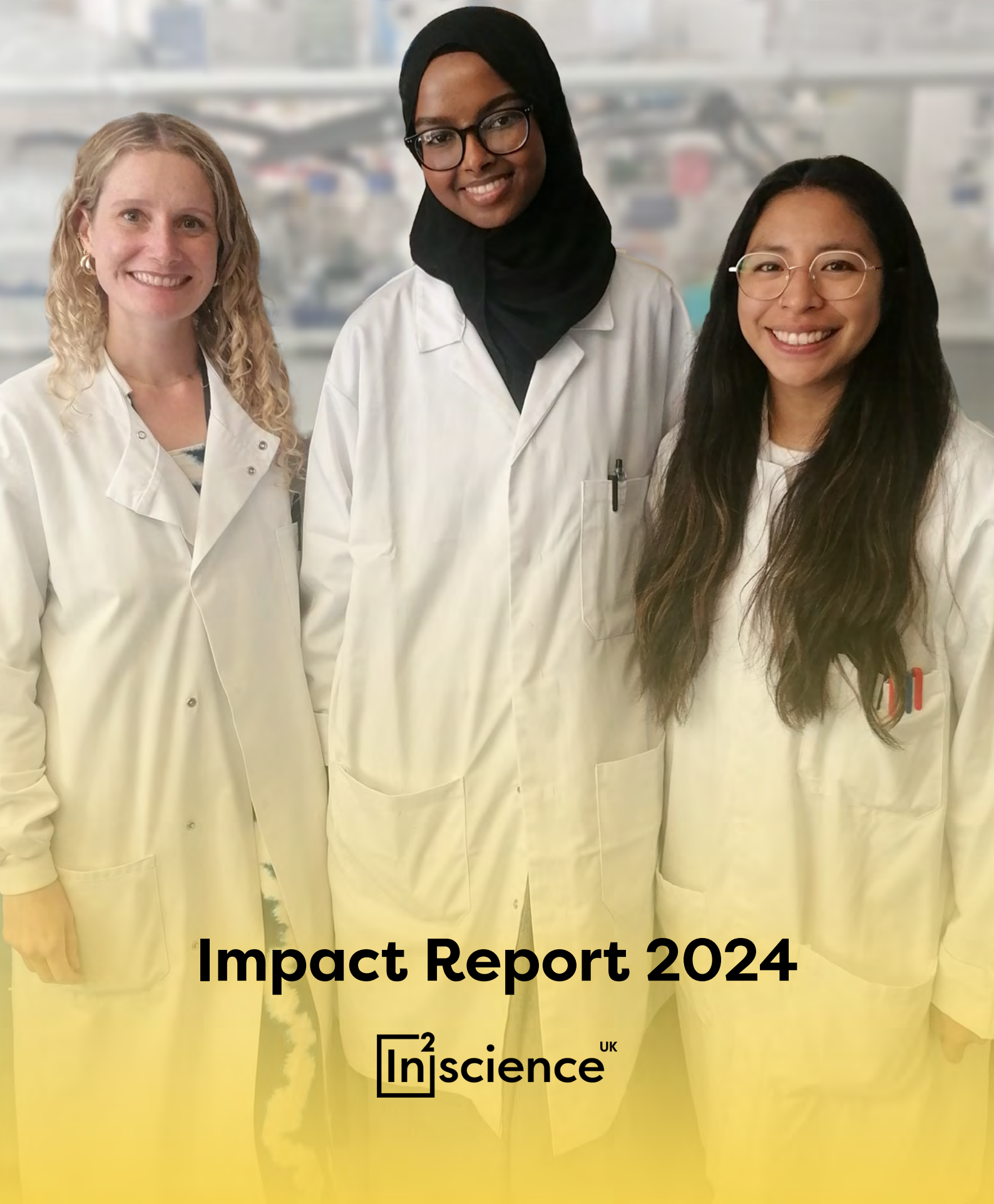


In²research



Impact Report 2024

In²science^{UK}

Foreword



“

I am pleased to present In2scienceUK's impact report for this year's In2research programme. This year, we have been able to support more participants than ever from low socioeconomic backgrounds and underrepresented groups, thanks to the support of our funders, volunteers and the whole In2scienceUK team.

I want to give a special thanks to our partners; **UCL, UCL Students' Union, City University of London, Leading Routes** and **UPSIGN**, whose collaborations have contributed to another successful year of In2research. We have received the support of more volunteers than ever on In2research, including the many who want to return to support us year on year. We are incredibly grateful for the continuous commitment of our volunteers - our hosts, mentors and workshop facilitators are a fundamental part of In2research and make a real difference to the lives of those we support.

The In2research programme has continued to support participants to access key skills and knowledge-building workshops, mentoring and research placements spanning a wide range of topics across STEM, arts and humanities, and social sciences. Please take a look at the case studies in this report; our motivated and passionate participants have so much to offer. It has been wonderful to see our participants having their talents recognised, with positive outcomes already being seen, including participants being offered and accepted onto doctoral and masters programmes, authoring and co-authoring papers, being offered research assistant posts and so much more. I'm thrilled that 70% of alumni in our follow-up survey reported offers of new opportunities following the programme.

In2research is now in its fourth year and our next cohort will be expanding to Glasgow and Manchester. This is an exciting shift towards a place-based approach which will help us to continue opening doors for our beneficiaries no matter where they live.”

Anishta Shegobin,
Head of Programmes



“

Having the opportunity to witness the personal and professional growth of another cohort of participants has been an honour. It's great to see that the In2research alumni community is growing and offering more opportunities as a result.

Through our partnerships and provision of race and cultural literacy training, we remain committed to our longer term aim of creating institutional change.”

Mike Sulu,
UCL Principal Investigator

Thank you to our supporters:



Our Vision

In2scienceUK exists to unlock the potential of young people from low socioeconomic backgrounds and boost diversity and inclusion in the sector, ensuring the UK remains at the forefront of science, technology, engineering and maths (STEM) industries.

We aim to achieve this by:



Empowering young people from underrepresented backgrounds to progress to vibrant careers in STEM.



Championing diversity in the STEM sector to drive enterprise, foster innovation and tackle our global challenges.

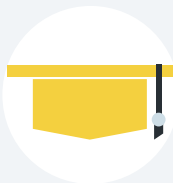


Working together with the STEM sector to actively address the skills shortage by breaking down barriers to access STEM careers.

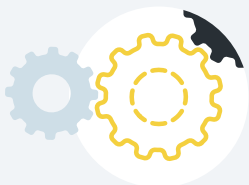
The latest insights from research into the STEM sector demonstrate how much In2scienceUK's work is needed now more than ever:



Only **6% of doctors, 9% of life science professionals and 19% of IT professionals** were from low socioeconomic backgrounds in 2022.¹



Black academic staff only represent 1% of all professors in the UK.²



The STEM skills shortage is thought to cost the UK economy an additional **£1.5 billion every year**.³



Postgraduate degree holders in OECD countries **earn almost 40% more** than those with an undergraduate qualification only.⁴

¹Office for National Statistics (2023), [VACS02: Vacancies by industry - Office for National Statistics \(ons.gov.uk\)](https://ons.gov.uk/vacs02)

²HESA : Higher Education Staff Statistics 2022-23 (2022): [Staff statistics](https://www.hesa.ac.uk/data-and-figures/staff-statistics)

³STEM Learning (2018), STEM [skills indicator](https://www.stemlearning.org.uk/STEM-skills-indicator)

⁴Sutton Trust (2021) Inequality in the highest degree? [Postgraduates, prices and participation](https://www.suttontrust.com/research/inquality-in-the-highest-degree/)

Programme Overview

In2research is a year-long programme which works with people from low socioeconomic and underrepresented backgrounds to address the three main barriers they face when accessing postgraduate research (PGR) study:



Knowledge and information

We aim to demystify research by providing information on the pathways to research careers, such as how to apply for PGR study and funding. In2research provides skills workshops to boost participants' interview and networking skills.



Lack of relevant experience

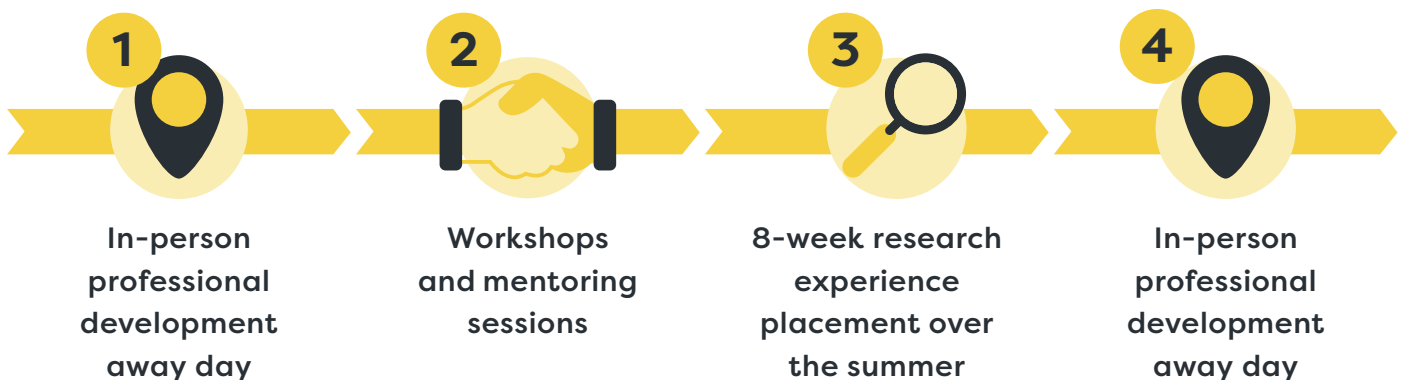
With many internships often being unpaid, there can be significant financial barriers to gaining the research experience that PGR study requires. In2research provides an eight-week research placement with a tax-free stipend exceeding £3,000.



Research culture and wellbeing

We recognise the significant unconscious and conscious biases that exist within institutions. We provide a tailored race and cultural literacy workshop for all volunteers to promote a more inclusive and welcoming workplace.

The programme comprises four different elements:



Our Participants



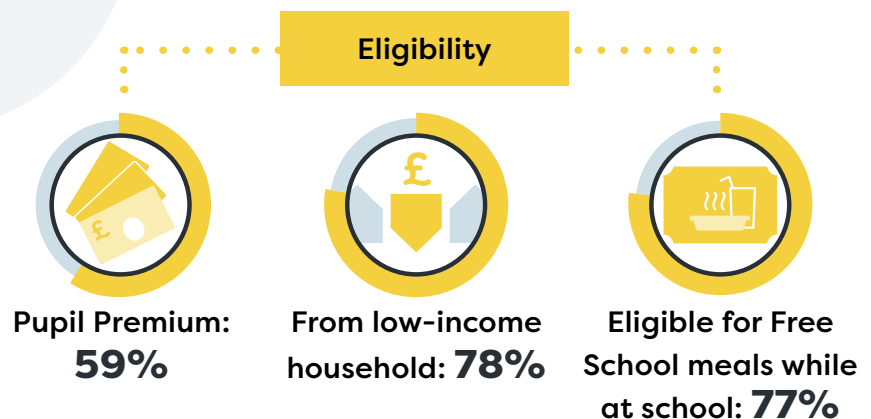
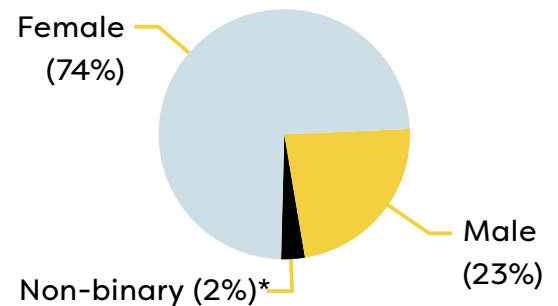
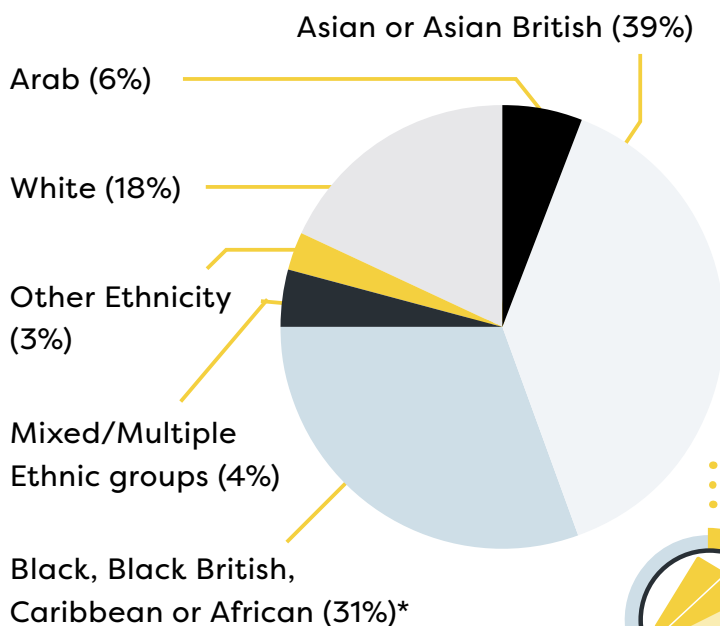
In 2023/24 we received **500 applications**



We supported **121 participants** in total

93% of our 121 participants took part in **31,080 hours** of in-person placement experience

82% of our young people were from UK-domiciled minority groups:



“

I am 100% confident I want to do a PhD, especially in cancer, because this placement has also not only improved my research skills, it also helped me learn **how to present like a scientist and how to communicate my research effectively**. I think this whole programme and the placement, with the mentorship I've received from Dr Somaiah, and before from Dr Dos Reis, really helped me.”

Palak - *In2research Participant*



*Due to rounding, the percentages presented may not total 100%

Sana's Story

Sana found In2research whilst looking for ways to gain research experience so she could explore it as a future career. She said the programme has helped her gain understanding of what a PhD is. Through gaining first-hand experience and speaking to professionals in the field through her placement, she has increased her confidence and is **now certain that she wants to follow a research career path and to pursue a PhD following her master's degree.**

“

I really wanted to find out something to do with research because I was really passionate about it but didn't know how to actually get the experience. Then I found In2research.

One of my favourite things about the placement was every week we had a check-in with my placement host. Every week she would tell me if I needed something to improve on or she would just be there to support, and I think that in itself made me feel like I'm being heard and I can improve my skills.

Another thing that I really liked was that we could actually gain hands-on experience and that I was trusted to do that. That in itself made me feel confident because my placement provider really helped me gain an understanding of everything.

Definitely the networking and talking to different people in the department allowed me to meet other professionals and I was able to ask them about other opportunities because I'm interested in working as a research assistant, and one of them was considering me to work with them in the future, so hopefully I'll be working with them soon.

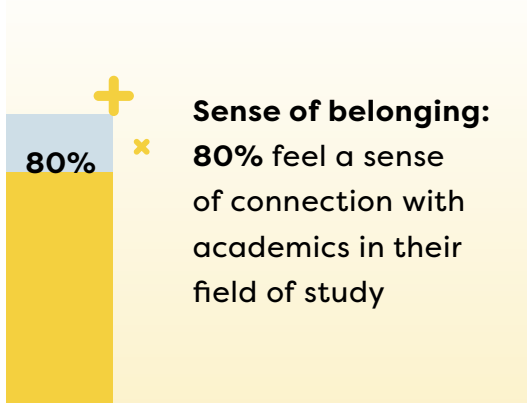
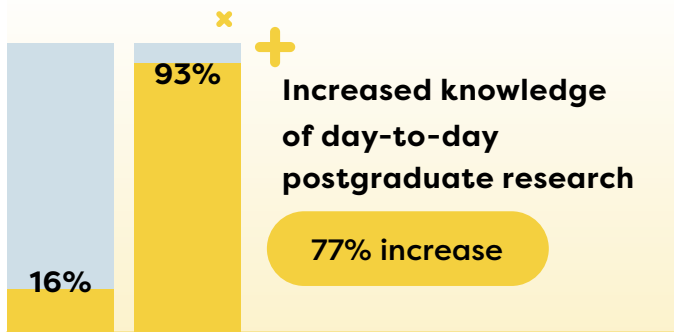
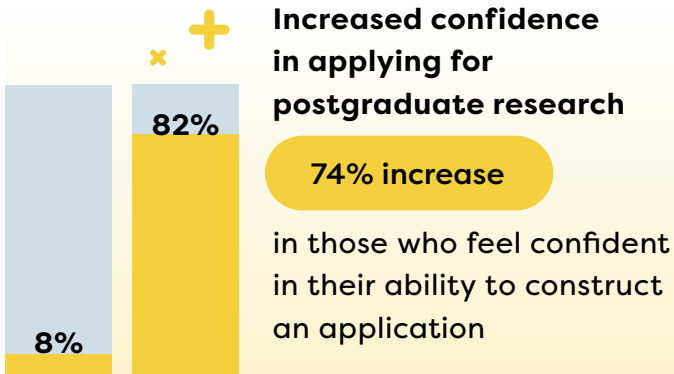
For anyone who's thinking of doing In2research, if you've got a passion for doing research, or even if you've thought about it, or want to find out more about and don't really know what it is, I would say definitely do it! I would definitely say **this is something that will expose you to a wide range of things and you will gain skills and no matter what you do, you will gain skills and a whole different type of confidence.**

I definitely now want to go into research, for sure. I definitely want to do a PhD after my master's.



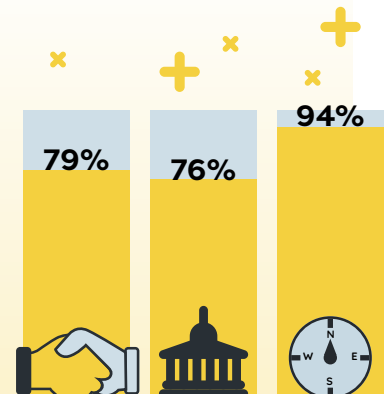
Our Impact

To evaluate In2research's impact, we worked with an independent evaluator to analyse participant survey responses before, during and after the programme:



Next steps:

79% built a network through their placement, 76% would like to do a PhD and 94% said In2research helped them to make a decision about a career in research



“

My mentor provided me excellent application and interview tips and feedback. I found their journey to a PhD inspiring and enjoyed hearing about their work. Their guidance in the sessions have made me confident in how to network with professors and PhD students in the placement.”

Find in-depth insights into our impact results and analysis [here](#)

Robert's Story

Robert wanted to explore a career in research but found the opportunities in medical school very competitive. In2research opened his eyes to the daily tasks conducted by researchers and he found it rewarding to meet people in academia. Having enjoyed the experience, Robert is now considering doing a PhD.

“

There's a certain sort of archetype that I don't necessarily fit in, but I was always interested in maybe having a career in research. So I think that's where the persistence came to get a research opportunity like this, to figure it out and to see if it's something I could do as a career. My Host Irina's been great since day one and she really tried to play to our strengths when it came to this project.

Our research project was all about dealing with patient-centricity when it comes to implementing digital tools in primary care. A lot of the things we focused on was within the primary care setting because it's the first port of call when it comes to our healthcare and being treated.

I've created this piece of work that I'm really proud of. I'm definitely considering doing a PhD in the future, whether that's the opportunities that we get whilst in medical school or a couple years removed from that. It's a case of when it's going to happen, not if.”



Longer Term Impact

To date, the In2research programme has supported 305 participants.

“

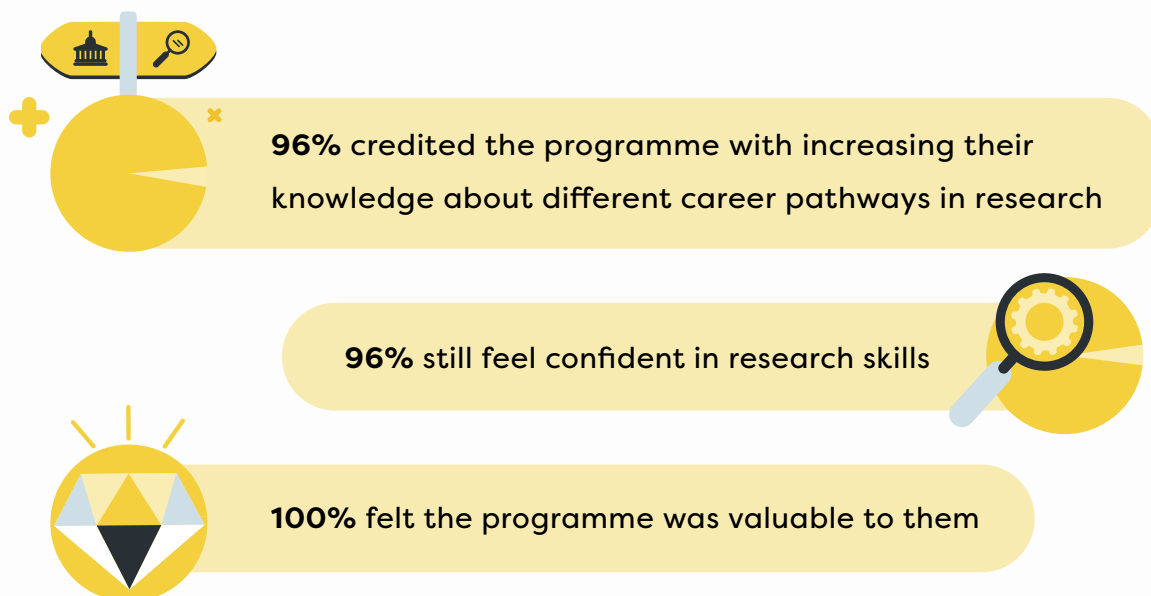
I've gained so much confidence. In my third year after my In2research placement, I could raise my hand up and speak in class and not turn fully red! I've gained confidence in going through the lecture content way faster and I've understood it way better - I got through research papers way faster because of the extra context I've gained.”

Anastasia - *In2research Alumnus*



One-year-on follow-up survey

We conducted a follow-up survey with the 2022/23 cohort to better understand the longer-term impact on In2research alumni. The data from the respondents demonstrated that:

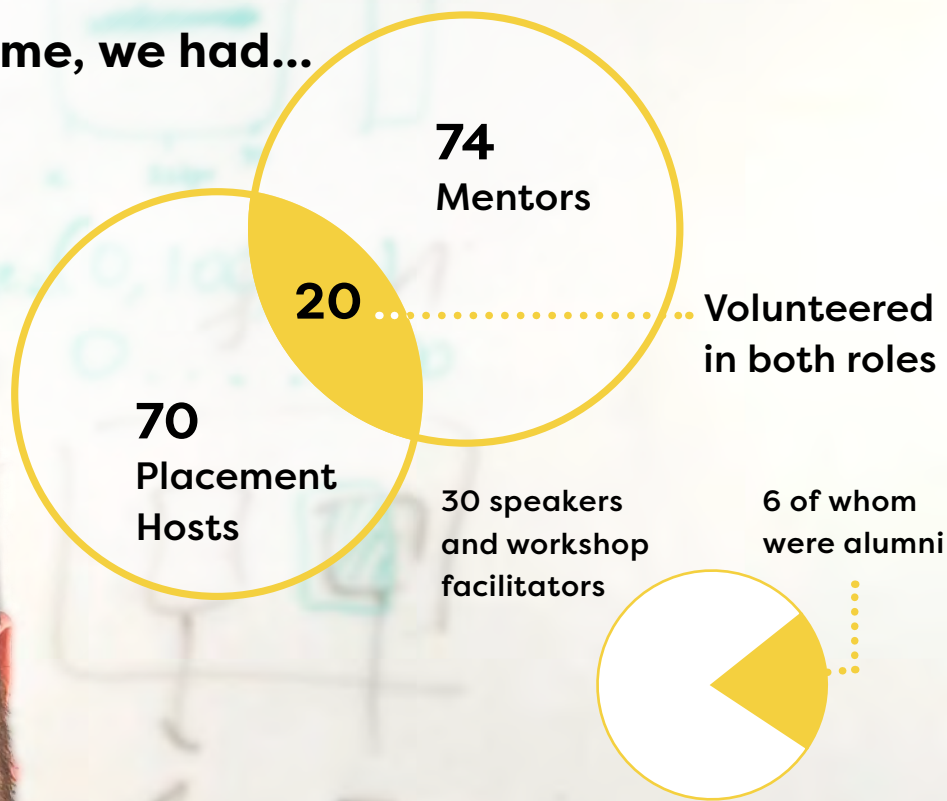


Find in-depth insights into our impact results and analysis [here](#)

Our Volunteers

Without the support of our volunteers, our mission would not be possible. We are hugely grateful to each and every volunteer who continues to offer their insight, experience and knowledge to support and inspire our beneficiaries.

Across the programme, we had...



Volunteer insights

Hosts

Mentors

84%

72%

Reported greater awareness of barriers faced by Black, Asian and minority ethnic PGR students

62%

71%

Were more likely to advocate for cultural change within my institution as a result of participating in In2research

80%

90%

Found In2research valuable

Find in-depth insights into our impact results and analysis [here](#)

Hear From Our Volunteers

“

I grew up in a really rural area in North Cambridge where there weren't necessarily the same opportunities and quite a high area of deprivation, so my work in public engagement's always been quite focused around trying to ensure opportunities are offered more equitably and that people can access them. The In2research programme really fits into that and offers a pipeline focusing on university age participants, which I think is a key part in that journey.



Dr Mike Norman - *Babraham Institute*



“

In2research is a really good opportunity to provide for students from underrepresented groups, and is a nice way to give them exposure to what we do. They can also bring their own insights and collaborate on projects. You forget when you're in a job that if students aren't exposed to research, they don't know about it!

I really enjoy hosting the placements and would be interested to do so again in the future. I find it fulfilling. It's beneficial for both the Host and the students.

Dr Liz Halstead - *UCL Institute of Education*



Our Programmes

In²STEM

Our In2STEM programme offers 16-19-year-olds passionate about STEM the opportunity to take part in online and in-person activities to deliver the skills, knowledge and confidence needed to excel.

In²careers

The In2careers community provides access to exclusive opportunities, including employability workshops, skills clinics and industry networking.

Other ways to get involved to create an impact for the future of STEM

Sponsor

a placement or invest your support across one or all of our programmes to exponentially increase the impact your investment creates in building a brighter future in the STEM sector.

Mentor

one of our beneficiaries to share your experiences and your passion for STEM, and help ensure the next generation of STEM leaders and innovators reach their full potential.

Lead

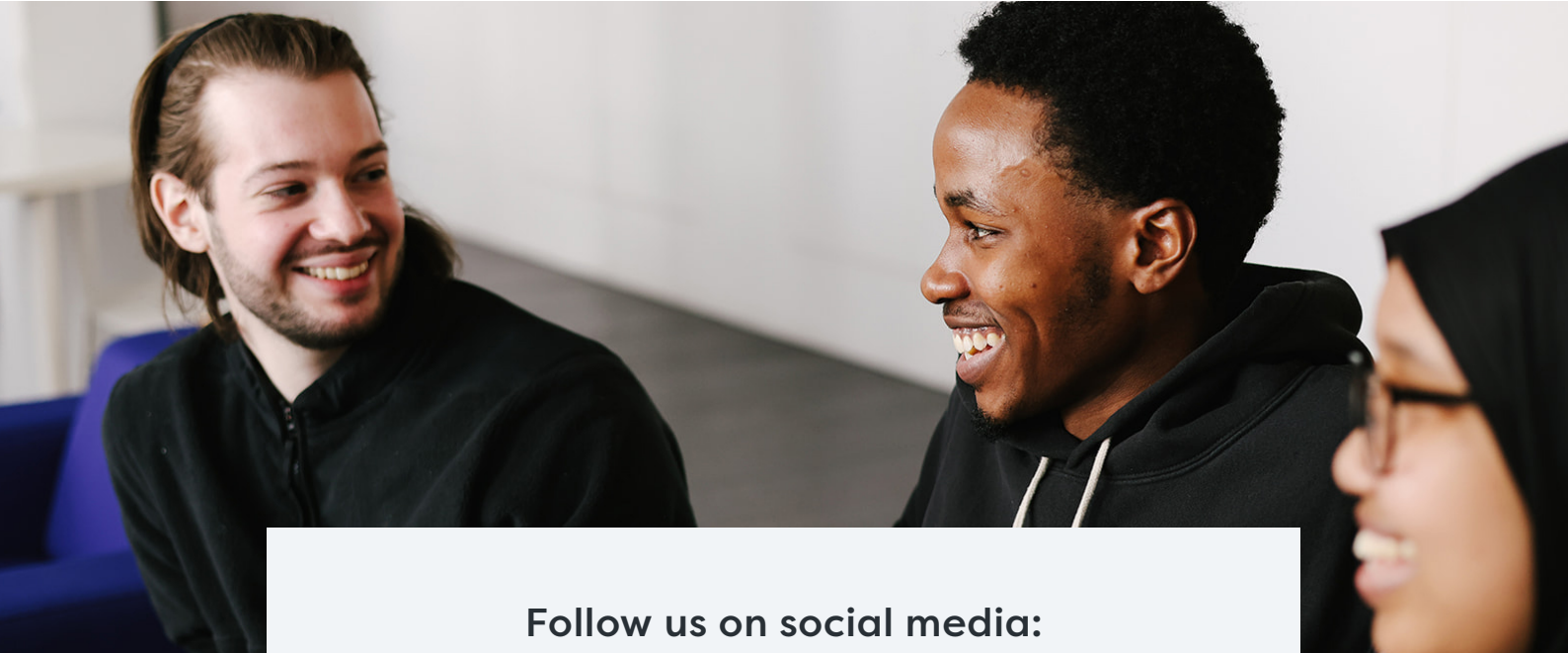
a workshop to share your expertise, skills, and experience to help individuals from underrepresented backgrounds explore the exciting world of STEM.

Host

a placement opportunity for individuals from underrepresented backgrounds, helping us strengthen diversity in the sector, break down barriers, and nurture innovation for the future of STEM.

Visit in2scienceuk.org or email development@in2scienceuk.org and find out how you can get involved today.

In²research



Follow us on social media:



In²science^{UK}

**In2research is delivered by
In2scienceUK in partnership with:**



LEADING ROUTES >

**STUDENTS'
UNION UCL**

UPSIGN
UK-Pakistan
Science and Innovation Global Network



Our registered address is 10 Queen Street Place, London, EC4R 1BE. In2scienceUK is a registered charity (1164821) and company (07706662) in England and Wales.