

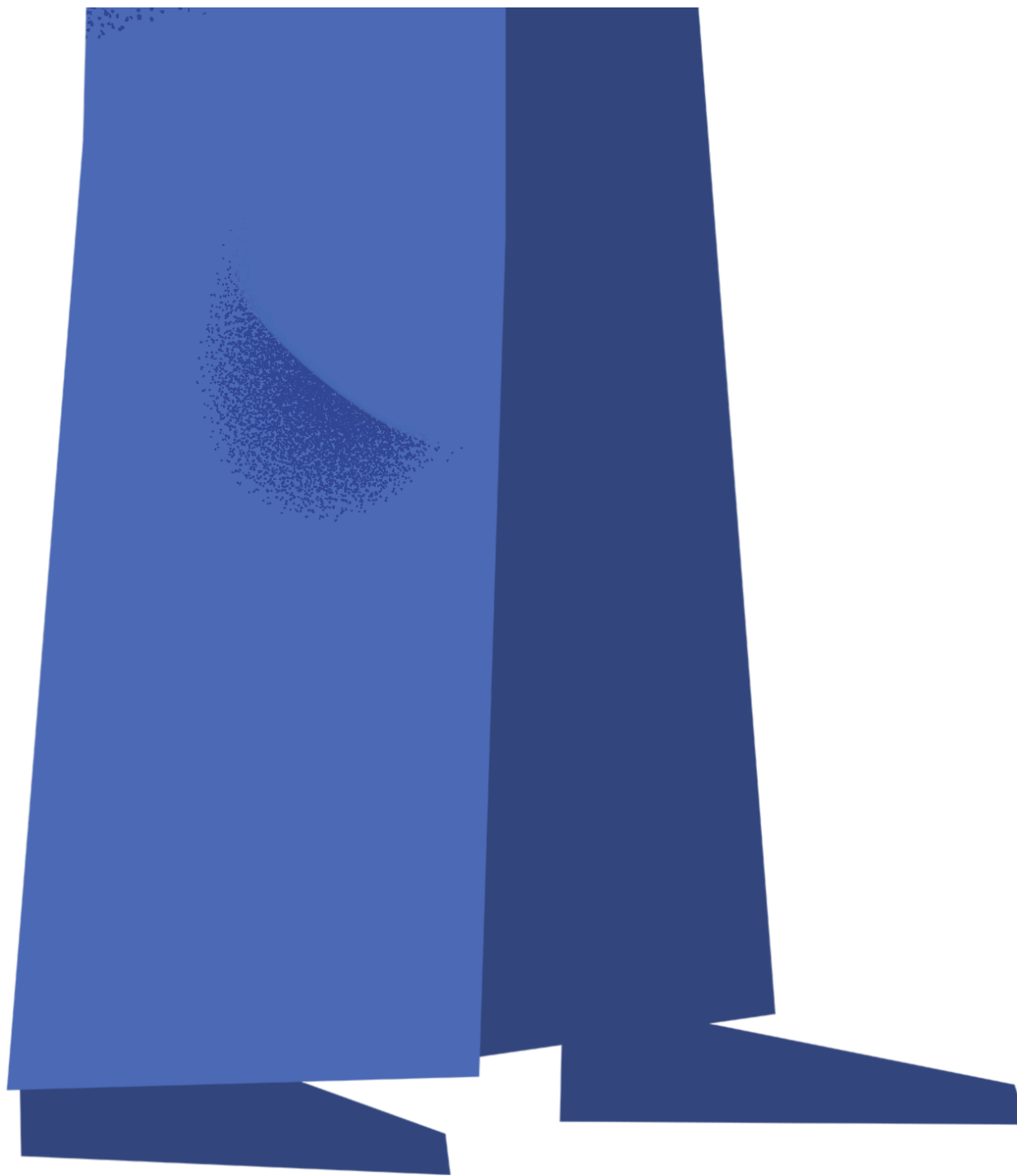
# PIN THE FLASK ON THE SCIENTIST



Stick here



Stick here



# Pin the flask on the scientist

A fun, STEM-inspired twist on a classic party game! Have fun, raise money in aid of In2scienceUK, and get everyone laughing.

## What is the game?

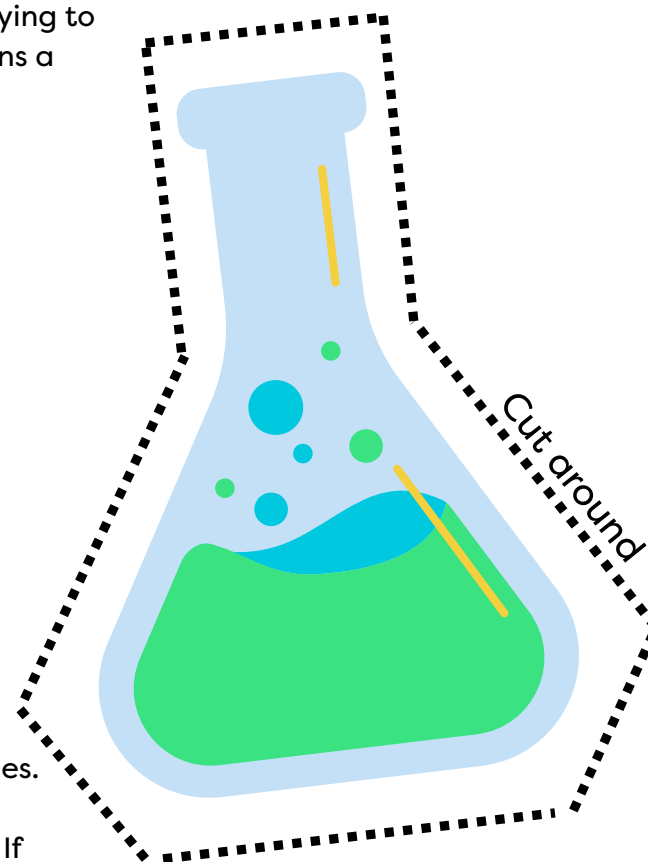
Just like “Pin the tail on the donkey,” players take turns (blindfolded or with eyes closed) trying to stick the flask in the correct spot - the scientist’s hand! Anyone who hits the marked “X” wins a small prize. It’s easy to set up, fun to play, and a great way to raise funds!

## What you will need

- A printed copy of this pack (A4 or A3)
- Glue stick or tape
- Blu Tack (or similar reusable adhesive)
- A blindfold or something to cover players' eyes
- A small prize for winners
- Wall or board to stick the scientist on
- Scissors

## Setup instructions

1. Print all pages - Use A4 or A3 paper depending on your printer.
2. Assemble the scientist - Each page says “Stick here” at the top. Stick this edge to the back of the previous page's bottom edge. Use glue or tape, and line up the edges carefully.
3. Cut out the flask - Use the dotted line as your guide.
4. Add Blu Tack - Stick a small blob to the back of the flask so it can be used multiple times.
5. Set the price - Decide how much to charge per play (e.g. £1) and write it down.
6. Mount the scientist - Stick your assembled scientist to a wall, board, or sturdy surface. If that’s not possible, mount it to cardboard so someone can hold it up during play.
7. Prepare a backup flask - Print an extra just in case the first one gets damaged!



# Running “Pin the flask on the scientist” legally at fundraising events

“Pin the flask on the scientist” is a fun and simple game that can be used for charity fundraising without needing a gambling license as long as it follows these key rules **under UK law**:

- The game must rely on **skill or judgment**, not chance (or example, players try to pin the flask as close as possible to the correct spot while blindfolded).
- It must take place as part of a **non-commercial event**, such as a charity fundraiser, school fair, or community day, NOT for private profit.
- Any entry fee should be **modest**, and prizes should be **small** and appropriate (e.g. sweets, stickers, or donated items).
- All proceeds from the game must go to a **registered charity** or good cause (i.e. In2scienceUK).
- The game must be played **in person** during the event, not online or over multiple days.

As long as these conditions are met, the game is considered a legal game of skill and is not classed as gambling.

For full details and further guidance, visit the [UK Gambling Commission’s official advice](#).